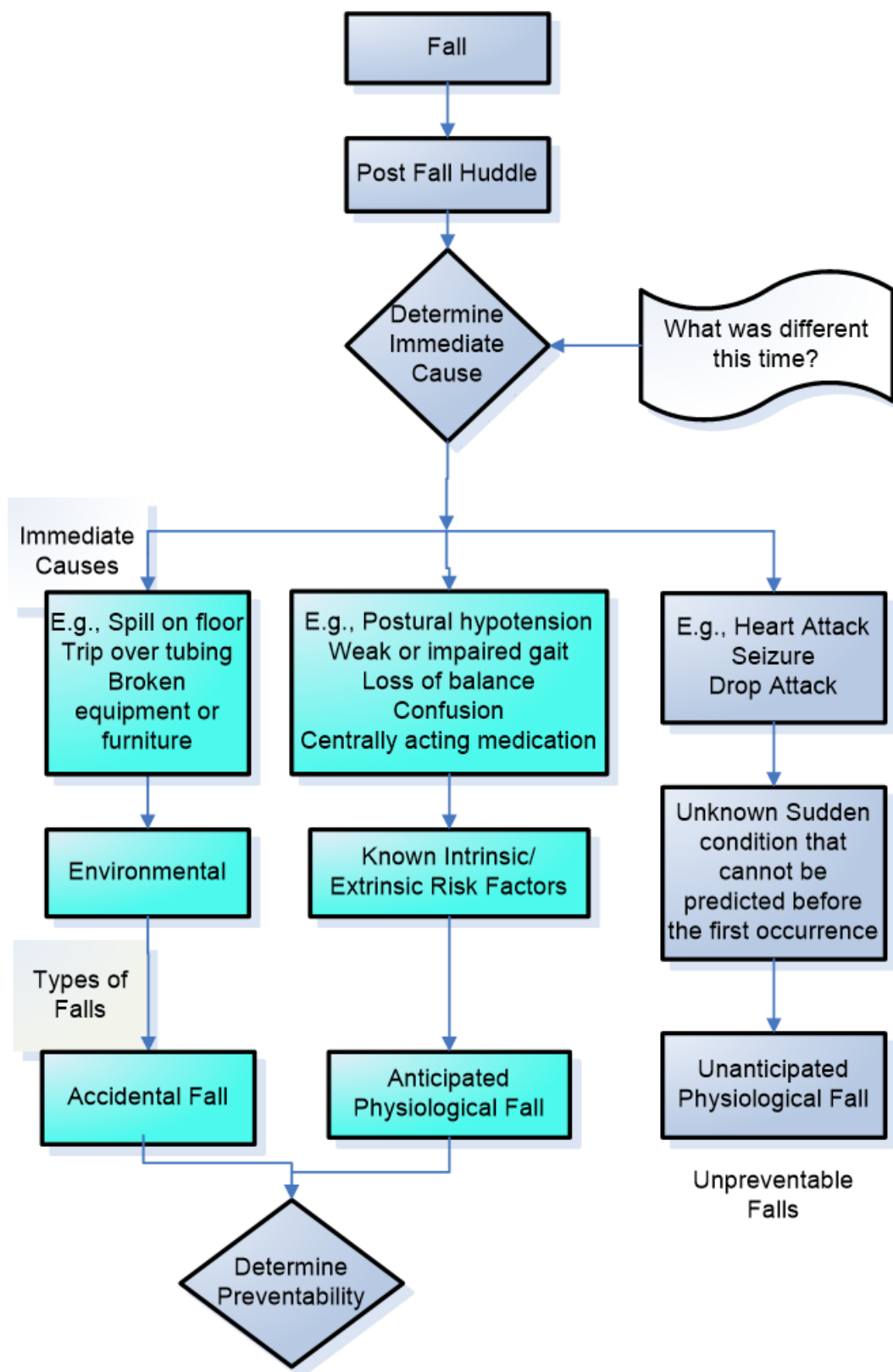


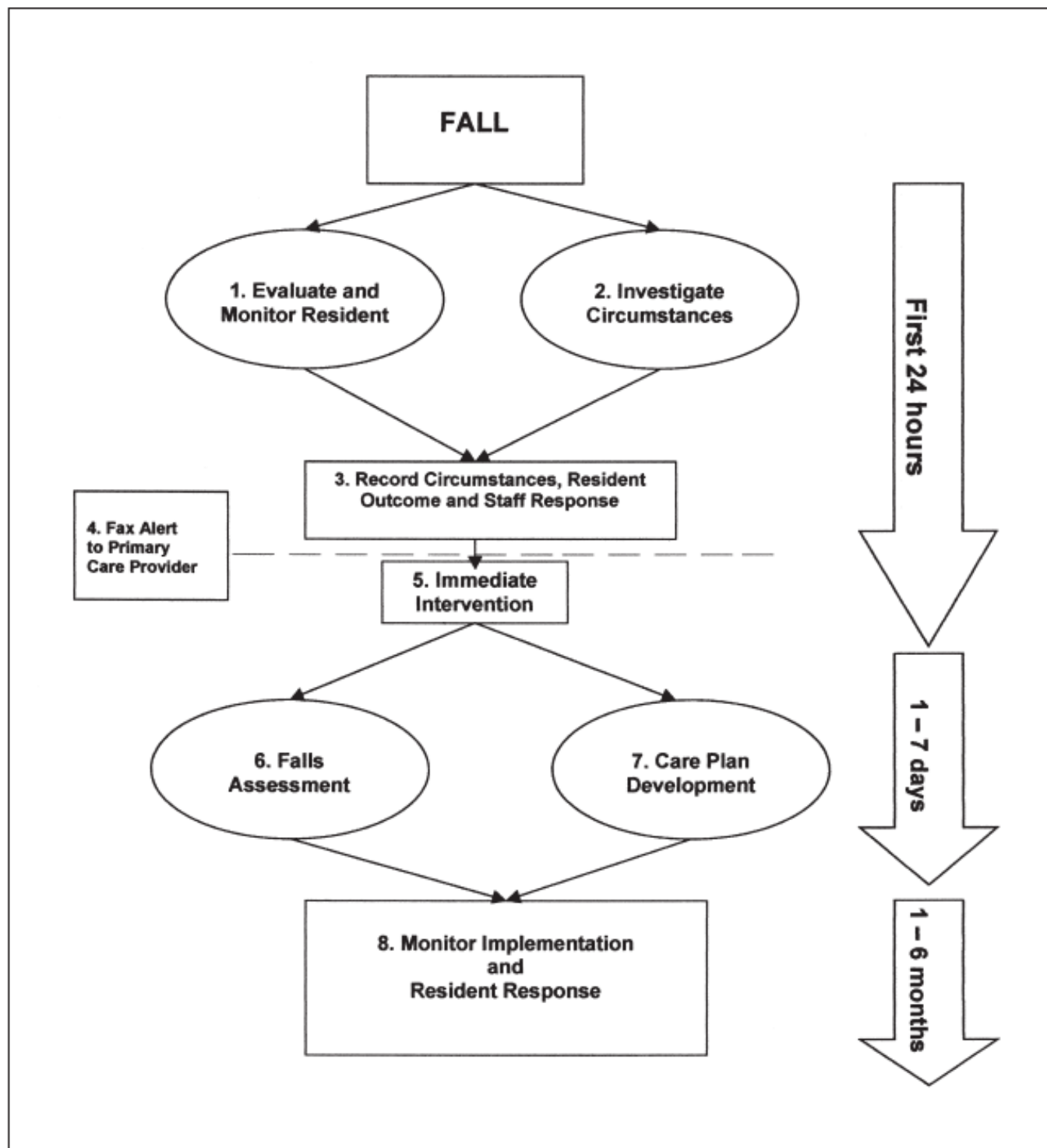


Decision Tree for Falls





Plan of Action for a Fall





Fall Interventions List

[Fall-Interventions-toolDownload](#)

[AHRQ-Fall-Management-Program-Appendix-BDownload](#)

Forms for Fall Evaluations

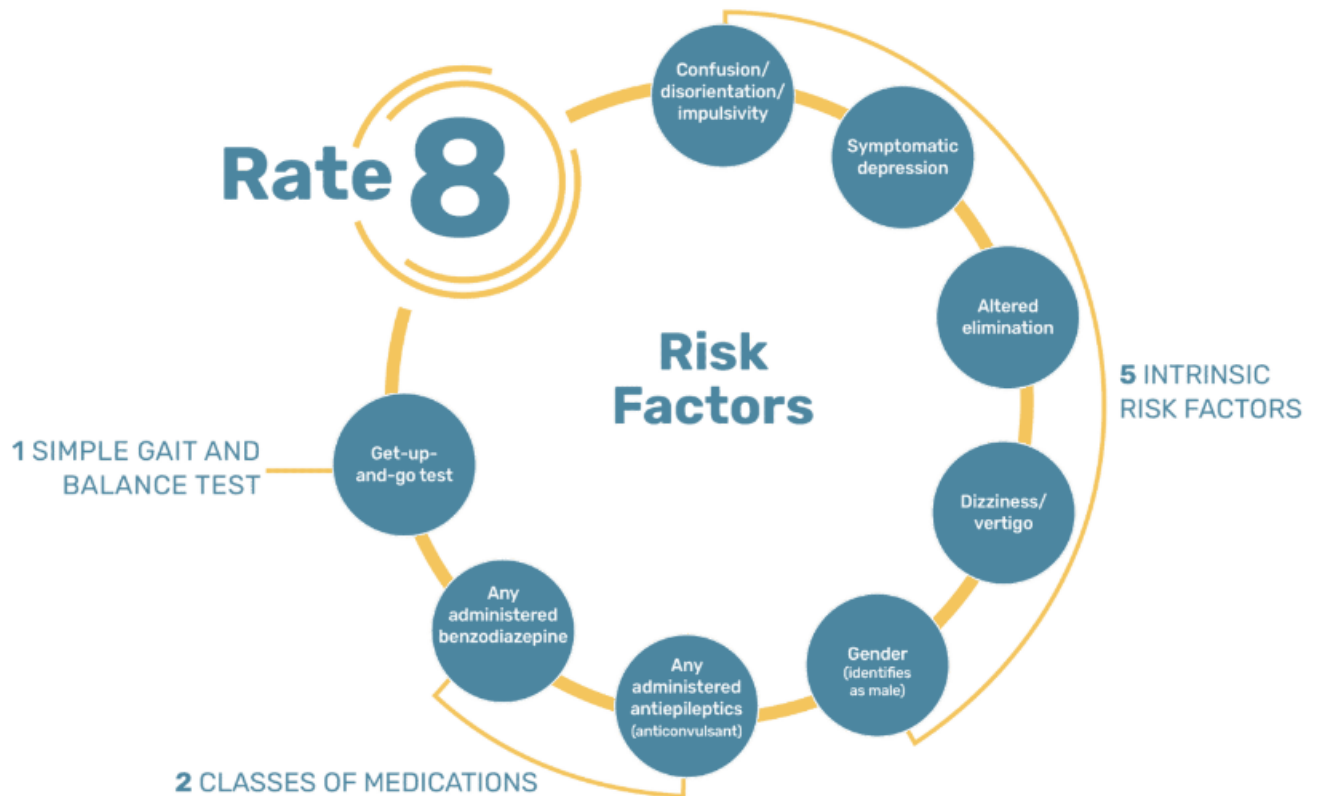
[AHRQ-Fall-program-Appendix-B-onlyDownload](#)

Fall Risk Scores

I don't find these to be very helpful. Fifty percent of those in a nursing home will fall each year and of those an estimated 30% will fall more than twice. We are starting with a high-risk group and deciphering those likely to fall among that high-risk group is difficult. I do think that having a framework, checklists, and processes to evaluate falls is useful.

[Fall Risk Assessment Scales: A Systematic Literature Review - PMC - docShepherd](#)

The Hendrich II Fall Model program outlines 8 factors that are involved in a significant number of falls. It's a nice reminder for what to initially consider during a fall evaluation.



[Hendrich II Fall Risk Model® \(hendrichfallriskmodel.com\)](http://hendrichfallriskmodel.com)

AHRQ Fall Management Program

[The Falls Management Program: A Quality Improvement Initiative for Nursing Facilities | Agency for Healthcare Research and Quality \(ahrq.gov\)](https://www.ahrq.gov/falls)