



- 467 flu hospitalizations
- 2,685 Covid-19 hospitalizations
- 471 RSV hospitalizations (mostly children < 4 y/o)

[COVID-19 vaccination after recovery](#)

Levemir Discontinuation

Levemir will no longer be available as of mid-January. Please switch patients over to an alternative long-acting insulin ASAP.

[Levemir discontinuation notice](#)

COVID-19 Vaccinations

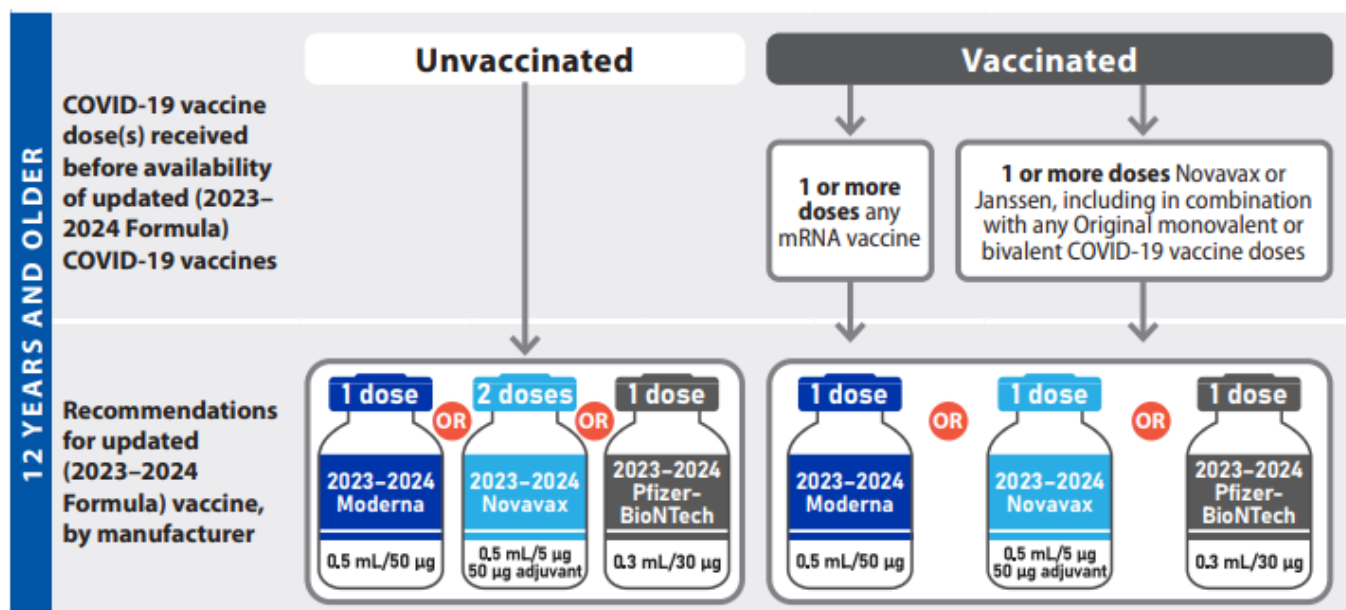
[COVID-19 vaccine clinic toolkit for long-term care facilities | Department of Public Health & Environment \(colorado.gov\)](#)

- The previous bivalent vaccines are no longer available in the U.S.
- Currently, the updated 2023-2024 Pfizer-BioNTech, Moderna, and Novavax Covid-19



vaccines are recommended by the CDC.

- If a person/patient has not previously received any Covid-19 vaccination, one of the aforementioned three updated 2023-2024 Covid-19 vaccines is recommended.



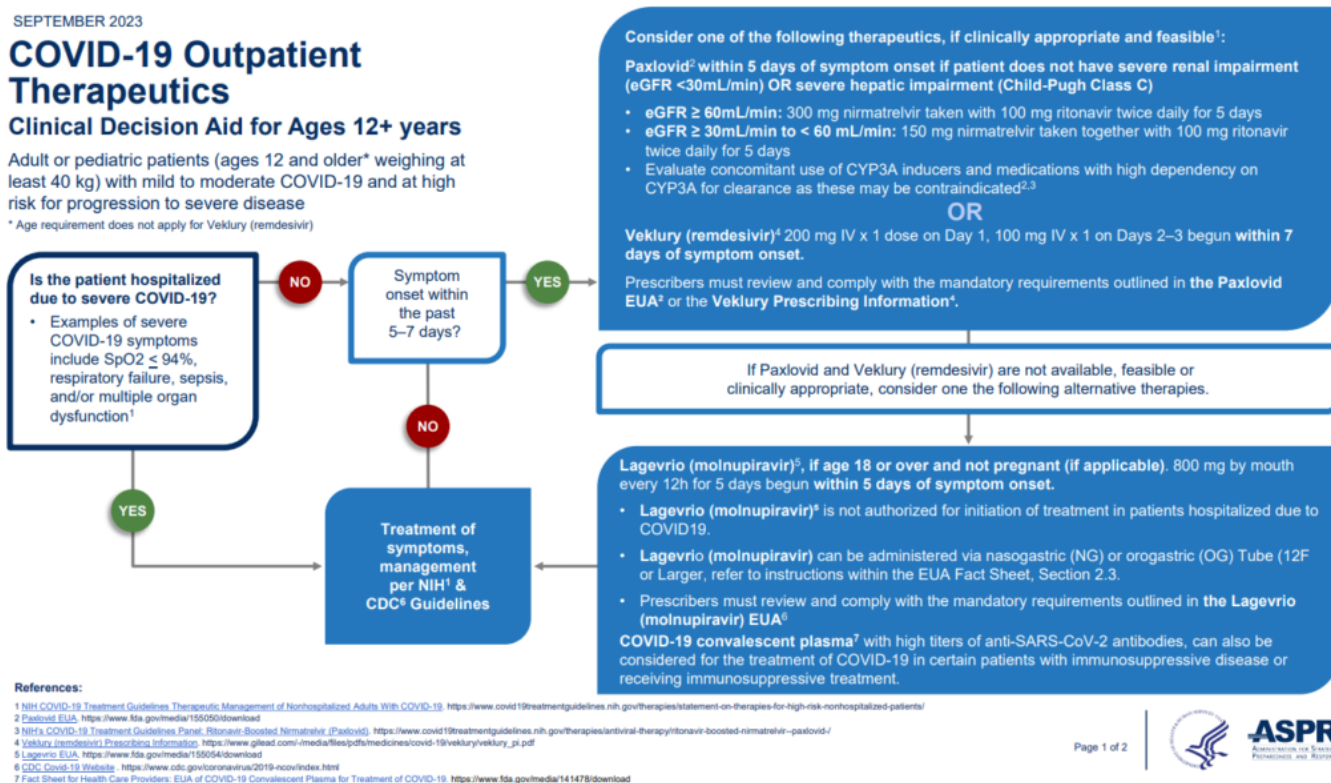
[Use of Updated COVID-19 Vaccines 2023–2024 Formula for Persons Aged ≥6 Months: Recommendations of the Advisory Committee on Immunization Practices — United States, September 2023 | MMWR \(cdc.gov\)](#)

COVID-19 Treatment Update

- Consider treatment for anyone over 50 y/o9 with high risk health condition (basically, anyone in long term care).
- Start treatment ASAP, even for mild symptoms. Must be started within 5 days of symptom onset.
- **The oral antiviral pill Paxlovid (nirmatrelvir co-packaged with ritonavir) and the IV administered drug Veklury (remdesivir) are the preferred treatments for eligible patients.**



- I'm not sure if we can get Veklury (remdesivir) in LTC.
- [Checklist for Paxlovid prescribing from the FDA](#)



Paxlovid (Ritonavir/Nirmatrelvir) Drug Interactions

[Paxlovid Drug-Drug Interactions | COVID-19 Treatment Guidelines \(nih.gov\)](#)

[Checklist for Paxlovid prescribing from the FDA](#)

- There are **so many potential drug interactions** that I think it is easier to provide a list of medications that are safe to co-administer with Paxlovid.
- Use the University of Liverpool [COVID drug interaction checker](#) (or your favorite drug interaction checker) prior to giving anyone Paxlovid
- **Check Renal Function** to assess if Paxlovid can safely be given and at what dose.



- GFR > 60: no dosage adjustment needed. Nirmatrelvir 300/ ritonavir 100mg PO BID x 5 days.
- GFR 30-60: Nirmatrelvir 150/ ritonavir 100mg PO BID x 5 days.



Medications Without Clinically Relevant Interactions

These medications may be coadministered without dose adjustment and without increased monitoring. This list is not inclusive of all noninteracting medications within each drug category.

Acid Reducers	Immunosuppressants	Pain
<ul style="list-style-type: none">• Famotidine• Omeprazole• Pantoprazole	<ul style="list-style-type: none">• Abrocitinib• Baricitinib• Methotrexate• Mycophenolate• Prednisone	<ul style="list-style-type: none">• Acetaminophen• Aspirin• Codeine• Ibuprofen• Meloxicam• Naproxen
Allergy	Lipid-Modifiers	Respiratory
<ul style="list-style-type: none">• Cetirizine• Diphenhydramine• Fexofenadine• Loratadine	<ul style="list-style-type: none">• Ezetimibe• Pitavastatin• Pravastatin	<ul style="list-style-type: none">• Corticosteroids (inhaled/nasal)• Formoterol• Montelukast
Anti-Infectives	Migraine	Miscellaneous
<ul style="list-style-type: none">• Azithromycin• Cidofovir• Hydroxychloroquine• Tecovirimat• Valacyclovir	<ul style="list-style-type: none">• Frovatriptan• Naratriptan• Rizatriptan• Sumatriptan• Zavegepant	<ul style="list-style-type: none">• Allopurinol• Contraceptives (PO)^a• Cyclobenzaprine• Donepezil• Enoxaparin• Finasteride• Levothyroxine• Most mAb products^b• Ondansetron
Cardiovascular	Neuropsychiatric	
<ul style="list-style-type: none">• Aspirin• Atenolol• Carvedilol• Furosemide• Hydrochlorothiazide• Irbesartan• Isosorbide dinitrate• Lisinopril• Losartan• Metoprolol• Prasugrel	<ul style="list-style-type: none">• Amitriptyline• Bupropion• Citalopram• Duloxetine• Escitalopram• Fluoxetine• Gabapentin• Lorazepam• Nortriptyline• Olanzapine• Paroxetine• Sertraline• Venlafaxine	
Diabetes		
<ul style="list-style-type: none">• Empagliflozin• Insulin• Metformin• Pioglitazone		



Influenza Vaccine Information

- [Prevention and Control of Seasonal Influenza with Vaccines: Recommendations of the Advisory Committee on Immunization Practices — United States, 2023-24 Influenza Season | MMWR \(cdc.gov\)](#)
- [Influenza Antiviral Medications: Summary for Clinicians | CDC](#)
- **If you are testing for COVID-19, also test for influenza.**

[flu-tx-2023Download](#)

RSV Vaccine Information

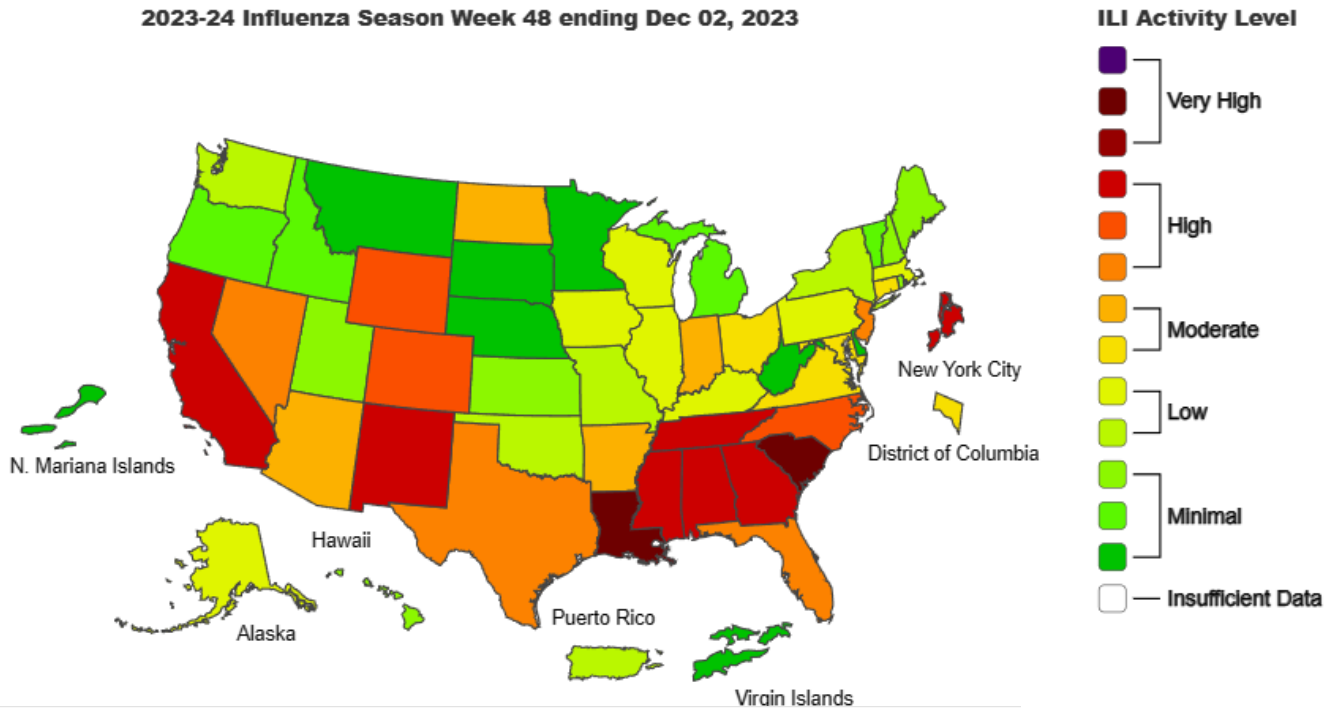
- [Use of Respiratory Syncytial Virus Vaccines in Older Adults: Recommendations of the Advisory Committee on Immunization Practices — United States, 2023 | MMWR \(cdc.gov\)](#)
 - A single dose RSV vaccine showed moderate-high efficacy in preventing symptomatic RSV related disease.
 - **ACIP recommends persons >60 years may receive a dose of RSV vaccine.**
 - Shared decision making emphasized.

Viral Respiratory Dz Report

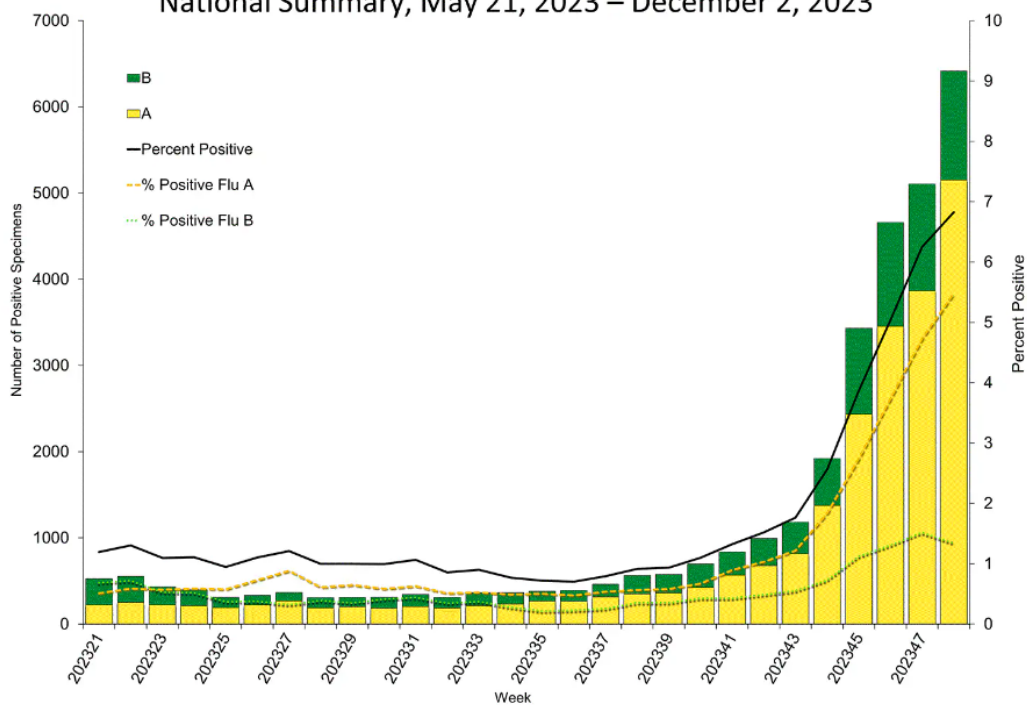
- [REDACTED]
- 6.8% increase in lab positive influenza
- Influenza A (H1N1) predominant strain
- Influenza positive tests on the rise
- 11.5% positive COVID-19 test rate nationwide



2023-24 Influenza Season Week 48 ending Dec 02, 2023

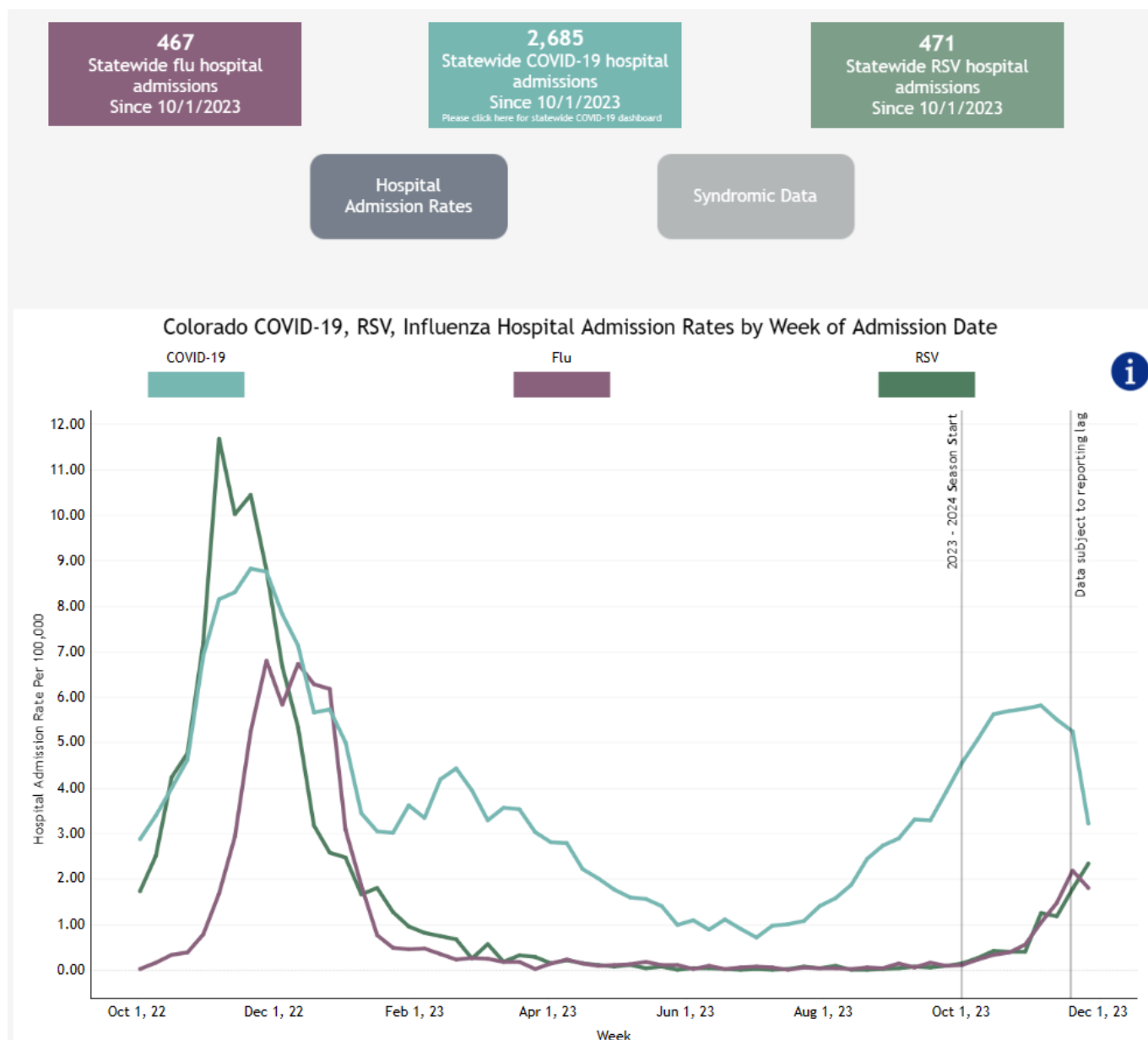


Influenza Positive Tests Reported to CDC by U.S. Clinical Laboratories, National Summary, May 21, 2023 – December 2, 2023





Medical Director Report December 2023



References:

- [COVID-19 Therapeutics Decision Aid \(hhs.gov\)](https://www.hhs.gov/covid-19/treatments-decision-aid)
- [COVID-19 Treatments: Key Messages for Long-Term Care Facilities \(hhs.gov\)](https://www.hhs.gov/covid-19/treatments-key-messages-for-long-term-care-facilities)
- [COVID-19 Treatments: Information for Long-Term Care Facilities | HHS/ASPR](https://www.hhs.gov/covid-19/treatments-information-for-long-term-care-facilities)
- [Use of Updated COVID-19 Vaccines 2023-2024 Formula for Persons Aged \$\geq 6\$ Months:](https://www.hhs.gov/covid-19/treatments-use-of-updated-covid-19-vaccines-2023-2024-formula-for-persons-aged-6-months)



[Recommendations of the Advisory Committee on Immunization Practices — United States, September 2023 | MMWR \(cdc.gov\)](#)

- [COVID-19 resources for long-term and residential care facilities | Department of Public Health & Environment \(colorado.gov\)](#)
- [Public Health Data and Analytics | El Paso County Public Health \(elpasocountyhealth.org\)](#)