



Get People Vaccinated!!!

F883 – Influenza and Pneumococcal Immunizations

This tag has been cited a few times at facilities in the last 3 months. Please ensure that we are getting residents vaccinated for pneumonia and influenza. I would also recommend a plan for RSV vaccination for those who want it.

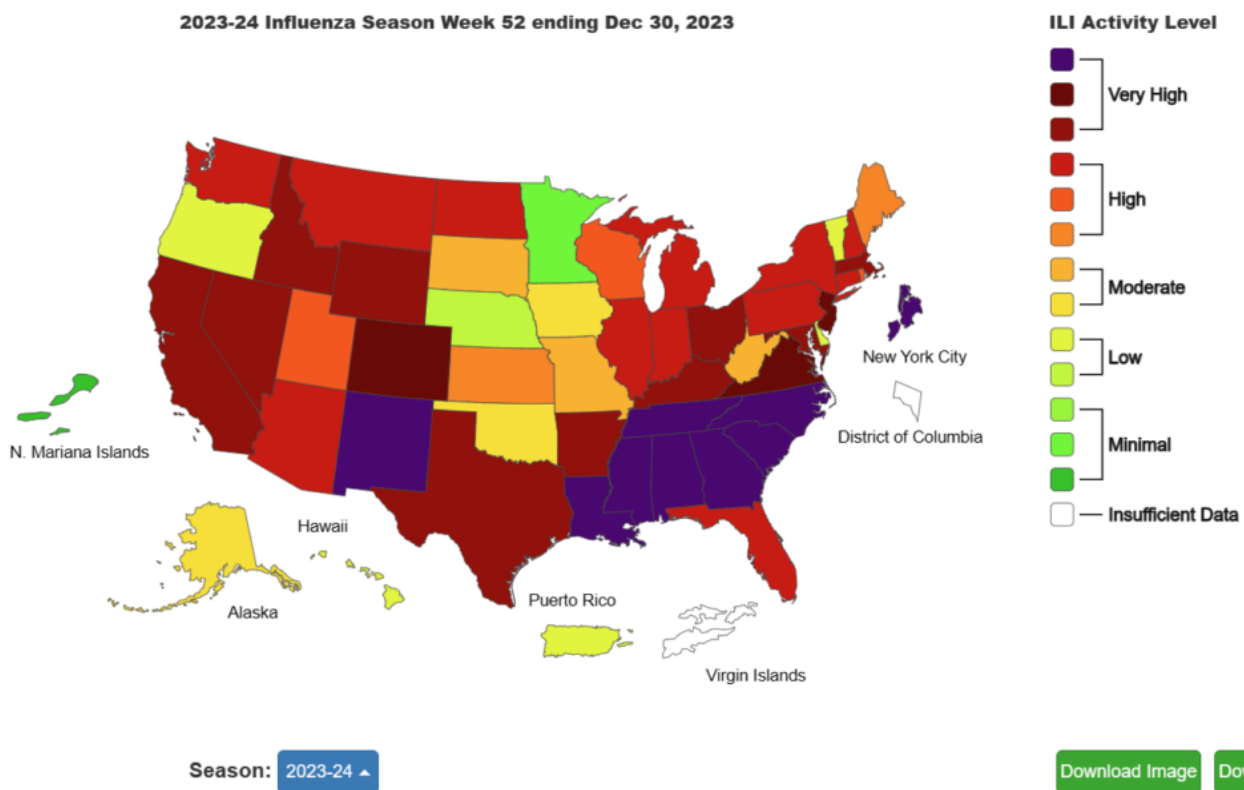
- We should have already given the new COVID-19 and influenza vaccine to those that want it.
- **RSV vaccine should be offered to those that want it.**
 - [Healthcare Providers: RSV Vaccination for Adults 60 Years of Age and Over | CDC](#)
 - [Respiratory Syncytial Virus Vaccines \(RSV\)-Fact Sheet for Healthcare Providers \(cdc.gov\)](#)
 - [Vaccine Information Statement: Respiratory Syncytial Virus Vaccine VIS \(cdc.gov\)](#)
- Ensure we are up to date on the Pneumococcal vaccine for those that want it.
- Use [this tool](#) to help you decide which Pneumococcal vaccine to give.
 - [PneumoRecs VaxAdvisor \(cdc.gov\)](#)
 - Everyone in LTC is essentially at risk and should receive the Pneumococcal vaccine. There are few exceptions.
 - **When in doubt, the PCV20 is a one-shot solution to become up to date.**
 - [Pneumococcal Vaccine for Adults Aged ≥19 Years: Recommendations of the Advisory Committee on Immunization Practices, United States, 2023 | MMWR \(cdc.gov\)](#)



[CDC_HAN-GET-vaccines-done-nowDownload](#)

COVID-19, Influenza, RSV Update

- Very High rates of INfluenza and increasing rates of RSV in Colorado.
- Norovirus outbreaks in December and January





Medical Director Report January 2024

1,347
Statewide flu hospital
admissions
Since 10/1/2023

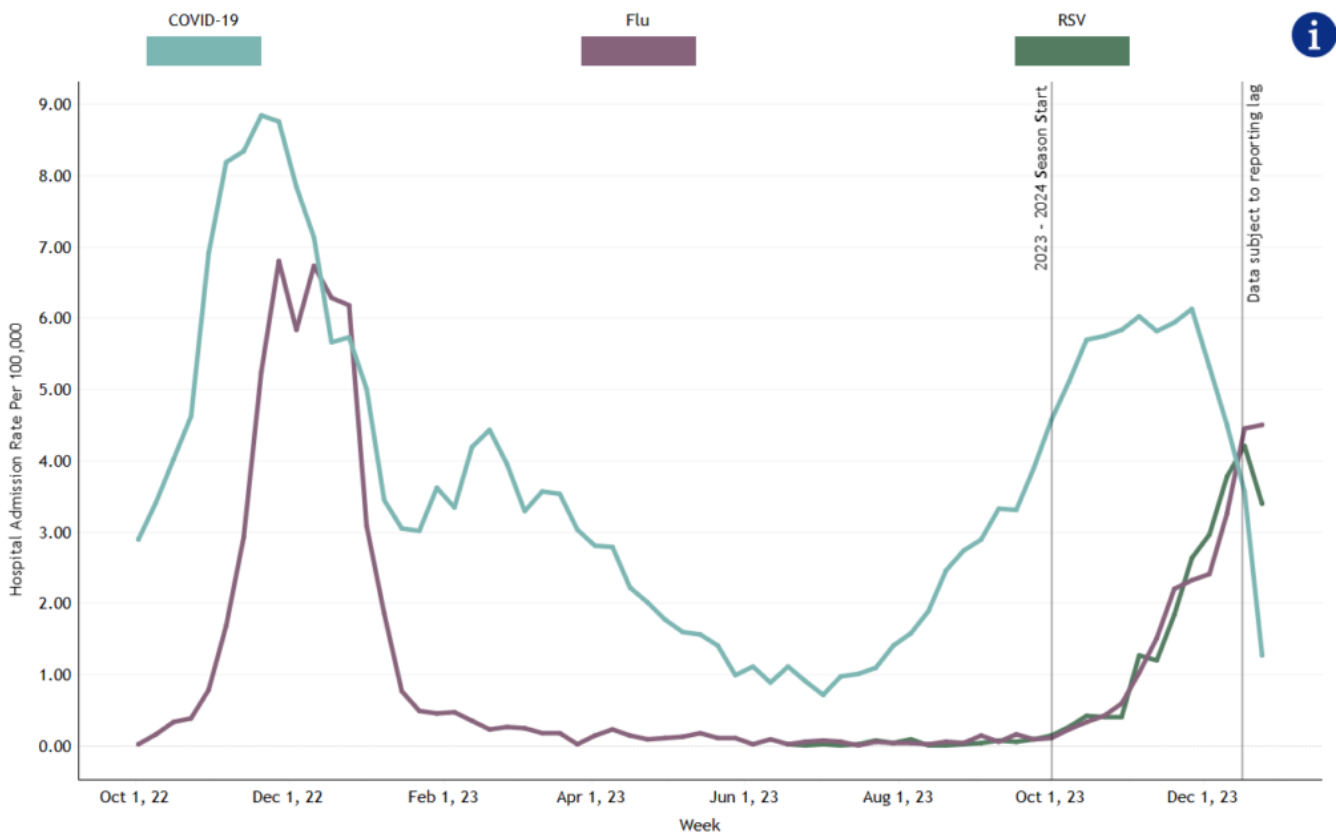
3,784
Statewide COVID-19 hospital
admissions
Since 10/1/2023
[Please click here for statewide COVID-19 dashboard](#)

1,321
Statewide RSV hospital
admissions
Since 10/1/2023

Hospital
Admission Rates

Syndromic Data

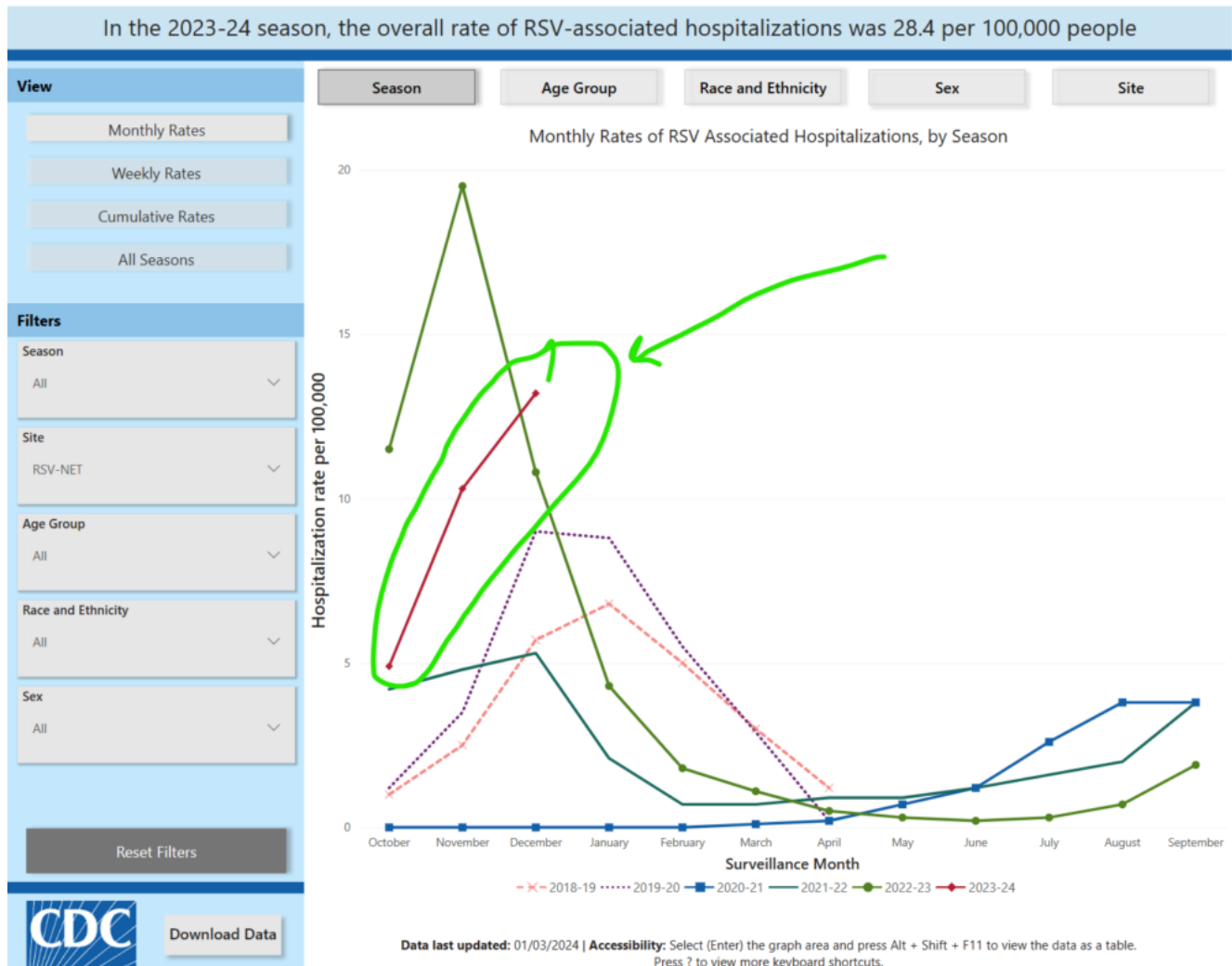
Colorado COVID-19, RSV, Influenza Hospital Admission Rates by Week of Admission Date



1. Hospital admission data are preliminary and subject to change as more data become available. In particular, case counts and rates for recent hospital admissions are subject to lag. Delay for case identification and reporting may increase around holidays or during periods of increased hospital utilization. As data are received each week, prior case counts and rates are updated accordingly.

2. RSV-associated hospitalizations became reportable statewide on June 18, 2023. Previously RSV-associated hospitalizations were only reportable in five Denver metro counties (Adams, Arapahoe, Denver, Douglas, Jefferson) from 2018 to the spring of 2023. To see RSV historical trends for that time period, please see the Emerging Infections Program data.

Updated on: 1/3/2024



[RSV Outbreak Plan](#)

Falls and Vision Impairment

- [Trio of Eye Diseases Linked to Falls, Fractures in Older Adults | MedPage Today](#)
- Patients with cataracts, AMD, or glaucoma had 25% to 38% higher adjusted risks vs controls



- A [2014 CDC survey](#) of adults ages 65 and up found that 46.7% of those with severe vision loss reported a fall within the last year versus 27.7% of those without severe vision loss.
- In 2005, [a study of 537 older patients](#) with hip fractures in Scotland found that 46% had significant visual impairment, in almost half of cases due to untreated cataracts.